

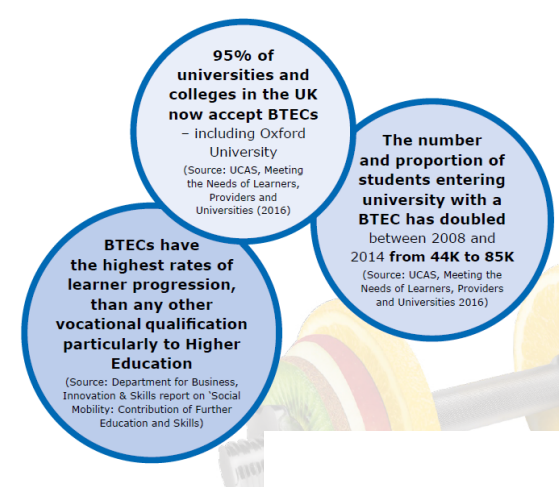


**St Neots**  
Learning Partnership



**PE**

## LEVEL 2 FOOTBALL SCHOLARSHIP—COURSE OUTLINE SEP 2018



### Academic Course Outline

The Level 2 Football program is designed to provide students with an initial 1-year academic pathway. The course followed is the BTEC Level 2 Technical Diploma for Sport and Activity Leaders.

This course is very much seen as a 'bridging' year, in which students will be developing the necessary skills and knowledge to help them progress on to the Level 3 Sport program in years 2 and 3.

Students undertaking this course will have received an APS score of lower than 5 in their GCSE / BTEC exams. Any student who does not successfully achieve a 4 or above in English and/or Maths will be required to re-take these qualifications as part of their program.

The 6 mandatory units studied on this course are highlighted in the diagram, along with the 2 optional units (1 of which will be completed).

*BTEC helps students get the skills that today's employers are looking for... BTEC is considered the gold standard of vocational learning.*

Peter Jones, CBE

### BTEC Level 2 Technical Diploma for Sport and Activity Leaders

Learners will need to complete and achieve the six mandatory units and one optional unit.

<b>Unit 1:</b> Leading Sport Safely and Effectively	60 GLH	On-screen test (external - set and marked by Pearson)	Mandatory
<b>Unit 2:</b> Working in Sport and Activity Leadership	60 GLH	Practical task (external - set and marked by Pearson)	Mandatory
<b>Unit 3:</b> Leading Sport and Physical Activity	60 GLH	Practical assignment (internal - set and marked by your centre)	Mandatory
<b>Unit 4:</b> Coaching Sport	30 GLH	Practical assignment (internal - set and marked by your centre)	Mandatory
<b>Unit 5:</b> Developing Skills for Sport and Activity Leadership	60 GLH	Practical assignment (internal - set and marked by your centre)	Mandatory
<b>Unit 6:</b> Getting Others Active Outdoors	30 GLH	Practical assignment (internal - set and marked by your centre)	Mandatory
<b>Unit 7:</b> Leading Different Groups	30 GLH	Practical assignment (internal - set and marked by your centre)	Mandatory
<b>Unit 8:</b> Delivering a Sports Activity Event	60 GLH	Synoptic practical assignment (internal - set and marked by your centre)	Mandatory